



---

# DAKOTA

---



Opções:  
Acabamento exterior | Argolas | Fundo anti-deslizante | Furos para torneiras | Saia exterior em cobre (apenas na ref. sem argolas)

Options:  
Outside finishing | Rings | Antislip | Tap holes | Solid Copper skirt (only in ref. without rings)

1370 x 765 | 1540 x 765 | 1700 x 760



# DAKOTA

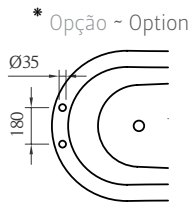
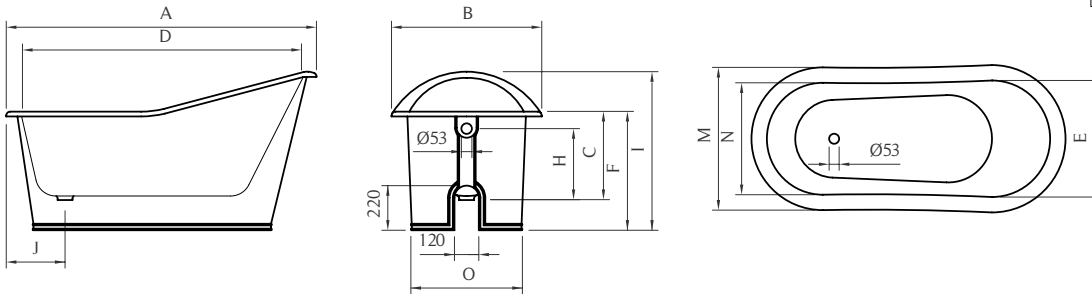
## DIMENSÕES - DIMENSIONS (mm)

<b>1370</b>	1370	765	445	1226	600	585	-	353	755	290	-	740	580	550	-	-	-
<b>1540</b>	1540	765	445	1380	600	585	-	353	755	290	-	740	580	550	-	-	-
<b>1700</b>	1700	760	450	1548	608	585	-	370	755	300	-	730	578	550	-	-	-
	A	B	C	D	E	F	G	H	I	J	L	M	N	O	P	Q	R

1370	
KG	LT
PESO/WEIGHT	VOL.
<b>155</b>	<b>165</b>

1540	
KG	LT
PESO/WEIGHT	VOL.
<b>163</b>	<b>180</b>

1700	
KG	LT
PESO/WEIGHT	VOL.
<b>170</b>	<b>205</b>



Pormenor da ába ~ Rim detail

