



# EPOQUE



## Opções:

Acabamento exterior ~ Saia exterior em cobre ~ Saia exterior em folha de cobre ~ Saia exterior em alumínio ~ Saia exterior em inox polido ~ Saia exterior em pele ~ Saia exterior latão polido | Fundo anti-deslizante | Furos para torneiras

## Options:

Outside finishing ~ Solid copper skirt~ Copper leaf skirt ~ Aluminium skirt ~ Polished stainless steel skirt ~ Leather skirt ~ Polished solid brass skirt | Antislip | Tap holes

**1700 x 680**

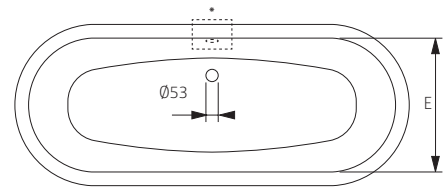
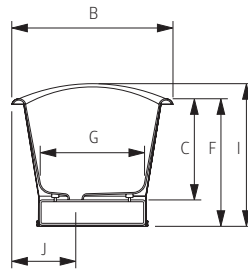
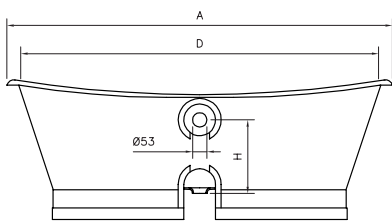


# EPOQUE

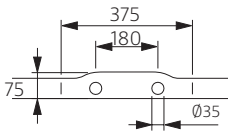
## DIMENSÕES - DIMENSIONS (mm)

<b>1700</b>	<b>1700</b>	<b>680</b>	<b>492</b>	<b>1620</b>	<b>585</b>	<b>635</b>	<b>465</b>	<b>390</b>	<b>695</b>	<b>250</b>	-	-	-	-	-	-
	A	B	C	D	E	F	G	H	I	J	L	M	N	O	P	Q

<b>1700</b>	
<b>KG</b>	<b>LT</b>
<b>PESO/WEIGHT</b> <b>198</b>	<b>VOL.</b> <b>215</b>



\* Opção ~ Option



Pormenor da ába ~ Rim detail

